

**2014-15**

**FORESTRY AND AGRIFOODS  
AGENCY  
Annual Performance Report**

# Table of Contents

## Message from the Minister

## Performance Reporting

|   | Page |
|---|------|
| Introduction  | 03   |
| Overview of the Agency                                    | 03   |
| 2014-15 Year in Profile                                   | 10   |
| Report on Performance                                     | 23   |
| Shared Commitments  | 38   |
| Opportunities and Challenges                              | 39   |
| Appendix I: Legislation                                   | 40   |
| Appendix II: Statement of Revenues and Expenditures       | 42   |
| Appendix III: Inactive Entities Reporting to the Minister | 45   |

## Message from the Minister



Speaker of the House of Assembly

Dear Mr. Speaker:

In accordance with the *Transparency and Accountability Act*, I hereby submit the 2014-15 Annual Performance Report for the Forestry and Agrifoods Agency. I am accountable for the results contained in this report. This Annual Performance Report highlights the programs and services provided by the Forestry Services Branch and the Agrifoods Development Branch to support the sustainability and growth of our forestry and agriculture sectors. This report also summarizes the progress by the Forestry and Agrifoods Agency in achieving the annual objectives for 2014-15 and its overall Strategic Plan 2014-17.

Sincerely,

A large, stylized handwritten signature in black ink, which appears to read 'Vaughn Granter'.

Vaughn Granter, MHA  
Humber West  
Minister

## Introduction

In the fiscal year of 2014-15, the Forestry and Agrifoods Agency (the agency) continued working towards goals that support its vision and mandate. The Annual Performance Report provides some of the highlights of the work of the Forestry Services Branch and the Agrifoods Development Branch over this past fiscal year.

The agency spent \$54.3 million in 2014-15 on forestry and agriculture programs and services to support resource advancement that economically benefit many regions of Newfoundland and Labrador.

The Forestry and Agrifoods Agency supports economic development, resource sustainability, innovation, diversification and collaborative partnerships that increase opportunities for our forestry, agriculture and agrifoods sectors.

## Overview of the Agency

The Forestry and Agrifoods Agency was established under the *Executive Council Act*. It is a category one public body under the *Transparency and Accountability Act*. The legislation administered by the agency is provided in Appendix I. On March 12, 2015, ministerial responsibility for the Forestry and Agrifoods Agency transferred from the Minister of Natural Resources to the Minister of Fisheries and Aquaculture.

### Vision

The vision of the Forestry and Agrifoods Agency is a province that realizes the full benefit from the sustainable development of its natural resources.

### Mission Statement

By March 31, 2017, the Forestry and Agrifoods Agency will have supported programs and services to strengthen and sustain forestry, agriculture and agrifoods industry development in an innovative and economically beneficial manner.

## Mandate

The mandate of the Forestry and Agrifoods Agency includes the supervision, control and direction of all matters relating to:

- Sustainable forest management, such as forest resource utilization, construction and maintaining forest resource roads, forest protection, silviculture, inventory and mapping, conservation, management and planning, research, frontline client services, and enforcement and compliance.
- agriculture, including, without limitation of the word "agriculture," agrifoods, agronomy, horticulture, animal husbandry, aviculture, apiculture, the development of forage production and the growing of hay and the products of agriculture, including, without limitation of the word "products," animals, meats, fur, eggs, poultry, wool, dairy products, berries, grains, seeds, fruit, including wild fruit, fruit products, vegetables and vegetable products;
- animal health;
- food technology and marketing; and
- agricultural land and the sustainable utilization, protection, conservation, management, surveying, mapping and development of agricultural land.

The agency's responsibilities for supporting natural resource development in the forestry, agriculture and agrifoods sectors are provided through the Forestry Services Branch and the Agrifoods Development Branch. The Policy and Planning Division provides policy support and coordination for both branches within the agency.

## Forestry Services Branch

The Forestry Services Branch is responsible for managing and regulating the forest resources of the province. Programs and services are provided through the following divisions within the branch: Forest Ecosystem Management, Forest Engineering and Industry Services, Legislation and Compliance and the Centre for Forest Science and Innovation. District offices operate within three regions – Eastern, Western and Labrador.

## Agrifoods Development Branch

The Agrifoods Development Branch is responsible for promoting the continued

development, expansion and diversification of competitive and sustainable primary and value-added agriculture and agrifoods businesses. Programs and services are provided through the following divisions within the branch: Agriculture Business Development, Animal Health, Land Resource Stewardship and Production and Market Development.

## Employees

As of March 31, 2015, the Forestry and Agrifoods Agency had 361 staff on payroll. Employees with the agency work in offices located in St. John's and Corner Brook, as well as in district offices and units located throughout the province.

The table below provides the breakdown of staff in each branch.

| Branch                   | Female     | Male       | Total      |
|--------------------------|------------|------------|------------|
| Agrifoods Development    | 67         | 44         | 111        |
| Forestry Services        | 56         | 178        | 234        |
| Financial Operations (1) | 4          | 6          | 10         |
| Executive Support        | 3          | 0          | 3          |
| Executive                | 0          | 3          | 3          |
| <b>Total<sup>2</sup></b> | <b>130</b> | <b>231</b> | <b>361</b> |

1. Financial Operations staff are shared with the Mines and Energy Branches and the Department of Fisheries and Aquaculture.
2. This figure does not include 192 seasonal employees employed in the Forestry Service ;

## Physical Location

The Forestry and Agrifoods Agency headquarters is located at the Fortis Building in Corner Brook. The mailing address is as follows:

Fortis Building  
P.O. Box 2006  
Corner Brook, NL A2H 6J8

In addition to headquarters, the agency has offices located throughout many regions of the province. A detailed listing can be located on the Forestry and Agrifoods Agency's Website [www.faa.gov.nl.ca/](http://www.faa.gov.nl.ca/) under the contact listings for the Forestry Services Branch and the Agrifoods Development Branch.

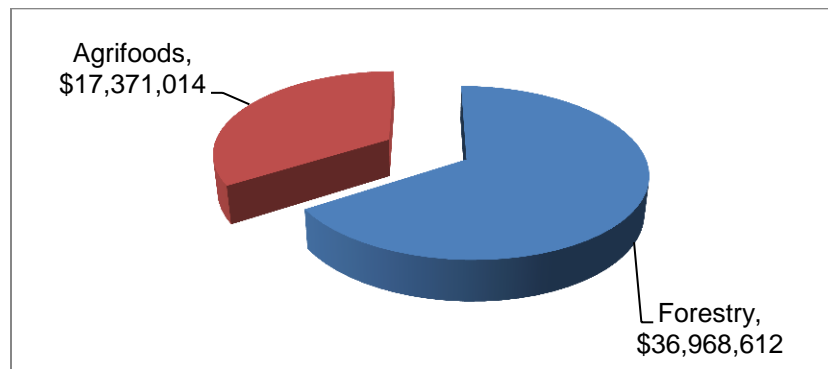
## Website

The Forestry and Agrifoods Agency's website address is [www.faa.gov.nl.ca/](http://www.faa.gov.nl.ca/). A link to the agency's web site is also provided in the main website for the Government of Newfoundland and Labrador at [www.gov.nl.ca](http://www.gov.nl.ca).

## Expenditures

Expenditures for the Forestry and Agrifoods Agency in fiscal year 2014-15 totaled \$54,339,626 million. This figure does not include \$4,534,077 related to executive and support services which was still a shared service with the Department of Natural Resources for Executive and Support Services for 2014-15. The following chart provides a breakdown of expenditures by branch. See Appendix II for additional details.

**2014-15 Expenditures by Branch**



## Lines of Business

### Enforcement and Compliance of Legislated Requirements

The agency's responsibility for enforcement as a tool in forestry management is delivered through the regional services structure. In this capacity over 100 Conservation Officers are located at various regional/district offices across the province. In addition to enforcing forestry regulations under the *Forestry Act/Regulations*, Conservation Officers are authorized to enforce provisions of the *Plant Protection Act*, *Motorized Snow Vehicles and All-Terrain Vehicles Act/Regulations* and certain sections of the *Wilderness and Ecological Reserves Act/Regulations*. The agency actively collaborates with other government departments and agencies on enforcement activities. The agency is responsible for monitoring timber harvesting operations as well as patrolling forest areas for compliance with the regulations under the various acts.

The Legislation and Compliance Division is located at headquarters in Corner Brook. In addition to providing support for enforcement and compliance related activities in regions and districts, the division also manages: Environmental Management System coordination; policy development implementation, analysis, and review; special investigations; coordination of training and certification for enforcement related duties including use of force; and enforcement equipment inventory and distribution.

### Licensing and Permitting

The agency's regional and district offices issue licenses and permits for: commercial or domestic timber cutting, commercial or domestic sawmilling, burning, operating during the fire season, timber export, the purchase of timber, protection of livestock from wild animals, bear protection, replacement of a big game license, removal of nuisance animals, game export, temporary outdoor identification cards, possession for taxidermy, transport of firearms, and fur bearer export.

### Regional Services

The policy and programs associated with sustainable forest management, forest health and public services are implemented through a regional/district structure. Regional services is responsible for the delivery of the silviculture, resource roads, forest fire suppression, and enforcement/compliance programs. In addition, regional services is responsible for public awareness programs (presentations to schools, service clubs,



etc.), addressing public concerns on other forest resource management issues and the development of district sustainable forest management plans.

### **Sustainable Forest Management**

The agency works to ensure a balance between environmental, economic and social values, while having forest ecosystems that provide viable populations of native species, and a sustainable forest economy and associated employment. Through the agency's headquarters in Corner Brook, and offices in St. John's, the agency is responsible for policy, legislation, programs and forest management planning that enable the citizens of the province to benefit from the services that the ecosystems provide while ensuring their sustainability and health.

The agency's forest management programs include silviculture, resource roads construction, forest inventory, forest fire suppression, forest insect control, forest management planning, enforcement/compliance, wood measurement and timber royalty, and industry development.

Furthermore, the Centre of Forest Science and Innovation is responsible for the development of forest-related research programs and science capacity in the province consistent with themes of the Provincial Sustainable Forest Management Strategy and other guiding documents.

Research themes under the ecological direction of the Provincial Forest Research Strategy include forest disturbance, climate change, ecosystem dynamics, biodiversity and water. Economic themes are grouped under innovation, industry and markets while social themes include forest based communities, aboriginal participation and forest values.

### **Animal Health**

The agency's animal health services consist of: farm animal veterinary services; supportive laboratory analyses for diagnostic and regulatory programs through the ISO 17025 accredited Animal Health Laboratory; control of food quality at the production or primary processing level under the *Food and Drug Act* (raw milk) and *Meat Inspection Act* (slaughterhouses); surveillance, research, and control of specific animal diseases of either economic interest to the livestock industry or of public health interest to the provincial community under the *Animal Health and Protection Act*; the oversight,

monitoring and support of investigations of cruelty to animals complaints (*Animal Health and Protection Act*); assistance to wildlife/conservation officials; promotion and control of Heritage Animals (Newfoundland Ponies) under the *Animal Health and Protection Act*.

### **Business Development Services**

The agency delivers a wide range of programs and services to support business development including: AgrilInsurance, Livestock Insurance; the Provincial Agrifoods Assistance Program, Growing Forward, and the Agriculture and Agrifoods Development Fund; grants and subsidies for the Newfoundland and Labrador Federation of Agriculture, 4-H Program, and the Provincial Training Program; and Professional Advisory Services through eight Agriculture Development Officers and three Farm Management Specialists.

### **Land Management**

The agency offers a number of programs and services in the area of land resource stewardship including the: Environment and Land Use Program, involving the Real Property Tax Exemption Program; Land Consolidation Program; Environmental Farm Planning Program; Agricultural Limestone Program; and Agricultural Access Roads and Electrical Services. Also included are soils and mapping activities, delivered through the Soil Survey Program; geographic information system development; field mapping and database development; and the Soil Fertility and Laboratory Service Program.

### **Production and Market Development**

The agency offers a wide range of programs and services aimed at maximizing production and market development at the primary and secondary levels. These programs and services include: professional and technical support, pest control training, research and development, market development, market intelligence, on-farm food safety, off-farm food safety, and marketing and promotion.

## 2014-15 Year in Profile

In 2014-15 the staff of the Forestry and Agrifoods Agency has delivered programs and services that support the sustainability and economic development of our renewable forestry and agrifoods resources. The following sections profile some of the accomplishments of the agency during 2014-15.

### Renewing the Forest for Future Generations

Central to the mandate of the agency is a commitment to forest sustainability. One way in which sustainability is achieved is through silviculture. Each year the agency implements a province-wide silviculture program and facilitates the delivery of a parallel program by Corner Brook Pulp and Paper Limited (CBPPL) through a cost-sharing arrangement with that company. The program is broadly comprised of two sub-programs, reforestation and forest improvement. Reforestation covers a wide range of activities associated with the establishment of new forests; whereas forest improvement deals with the management of existing juvenile forests to improve their growth and increase their future economic potential. In 2014-15, the agency invested \$7.5 million in the annual silviculture program which resulted in the silvicultural improvement of 7,900 hectares (ha) across Newfoundland and Labrador. More than 60% of the area treated was planted for future economic development and for the many other forest ecosystem values held by Newfoundlanders and Labradorians.



## Forest Fire Management and Coordination

During the 2014 forest fire season, Forestry Services Branch (FSB) forest fire staff responded to a total of 124 forest fires; 61 in Eastern, 17 in Western and 46 in Labrador regions. These fires occurred from May through October and resulted in the burning of 2,891ha of productive forest land. This was a fairly typical season with only one large project fire near the community of Mud Lake, Labrador in July.

Also in 2014, FSB Incident Management personnel were deployed to British Columbia and the Yukon as part of the Canadian Interagency Forest Fire Centre (CIFFC) Mutual Aid Resource Sharing (MARS) agreement. In conjunction with staff from Atlantic Canada, FSB staff assumed control of a large forest fire for a period of 19 days. A vast amount of experience was gained which shall prove useful here in Newfoundland and Labrador.



Fire management staff also provided forest fire program training courses throughout the year. In April, an Incident Command System (ICS) 300 course was offered and 17 people were successful in completing the course that was instructed by members of the NL Incident Management Team. In May, a Wildland/Urban Interface course (S-215 Fire Operations) was offered through a joint effort with Fire and Emergency Services NL during their spring training camp in Clarenville. A member of the FSB Incident Management Team successfully completed the Complex Incident Management Course (CIMC) in Portland, Maine in October as a participant on the New York Fire Department's Incident Management Team. An Intermediate Fire Behaviour Course (S-390) was offered in Corner Brook during the month of November and 13 people successfully completed the course that was instructed by two staff from Nova Scotia's Department of Natural Resources. Several other courses were provided at various times throughout the fire



season including ATV Safety, Standard First Aid, Transportation of Dangerous Goods, Hover Exit, Helicopter Safety and WHMIS.

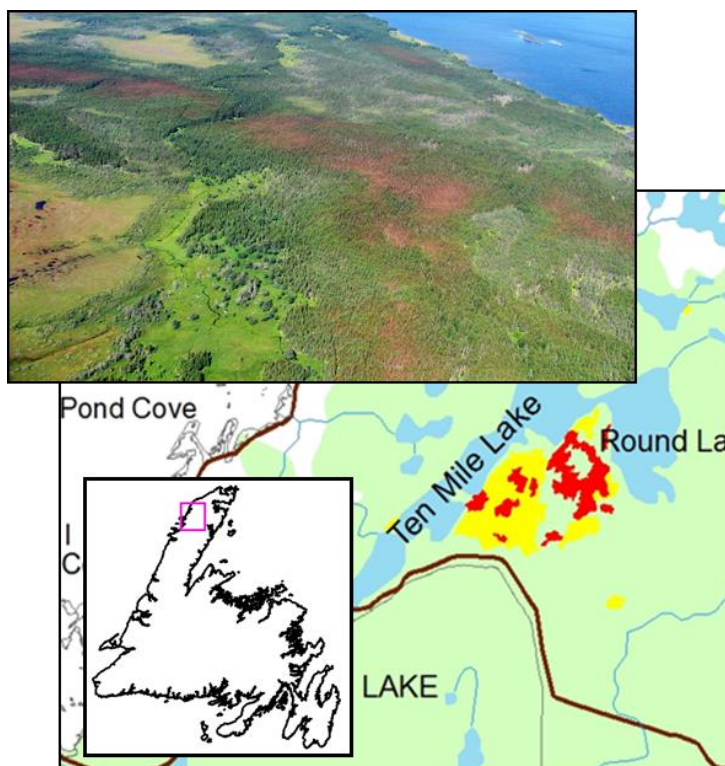
## Forest Insect & Disease Control

There was no requirement for an aerial control program to protect forest areas from major forest pests in the Province in 2014 which was only the third time this occurred in the last 37 years. However, annual surveys to monitor and forecast populations and expected defoliation levels from major forest insects were conducted throughout Newfoundland and Labrador. These surveys detected an increase in hemlock looper populations, particularly on the Northern Peninsula with 23,000 hectares of moderate-severe defoliation forecasted for 2015.

A control program using the biological control agent Btk is anticipated to be conducted in 2015 to protect the forest from the adverse impacts caused by this major insect. Populations of the spruce budworm (SBW), another major forest insect have also been on the rise in Eastern Canada. On the island, localized populations of this insect on the Northern Peninsula have reached levels where populations are expected to increase. In 2014, SBW populations capable of causing moderate-severe defoliation were again active in the Goose Bay area in Labrador. This was the eighth year that populations have been active in this area.

More detailed information on the 2014 forest pest monitoring program, as well as, information on the 2015 control program can be found at:

[http://www.faa.gov.nl.ca/nr/forestry/insect\\_disease/index.html](http://www.faa.gov.nl.ca/nr/forestry/insect_disease/index.html).



## Capital Resource Road Construction

The Forest Engineering and Industry Services (FEIS) Division of the Forestry Services Branch, administers the Capital Resource Roads Program. In 2014-2015 FEIS committed a total of \$5.908 million to the construction of forest resource roads on crown limits in Newfoundland and Labrador. A total of 70 new projects were awarded which involved:

- 96 km new construction
- 13 km of reconstruction
- 10 new bridges (2 wooden & 8 Steel Panel)
- 11 bridge repairs
- 11 km of surfacing
- 1715 km of grading
- 215 km of alder removal/ditching

All work was tendered through the Newfoundland and Labrador public tendering system and was open to contractors who were registered and in good standing with the Newfoundland and Labrador Construction Safety Association (NLCSA).



## Forestry Services Branch Continues to Support Sawmill Sector

The Forest Engineering and Industry Services (FEIS) Division has continued its support to the sawmilling industry in 2014-15 through a number of activities this fiscal year including:

- Sawmill Efficiency/Improvement Studies
- Wood Quality study on exotic species (Norway Spruce & Japanese Larch)

The mill efficiency and assessment studies are very important to the intermediate sawmills of the province. Efficiency / improvement studies help mills produce better quality lumber from a limited log supply by identifying areas requiring improvement and providing solutions.

As part of the FEIS commitment to help sawmills, a leading industry consultant was brought in to perform an assessment on a mill in central Newfoundland. The study will allow the mill owner to develop a better business plan and grow their business into a more stable operation for the region.

To support the forest industry, exotic species of trees have been planted throughout the province. Two of these species, Norway Spruce and Japanese Larch, have shown very good growth results, and some plantations will be ready for harvest within the next 15 to 20 years. To assess the wood of these two species, a trial was conducted to identify which products would be best suited for each tree species. Both species were identified as best fitting the value added markets. Norway Spruce was found to be best for pressure treating products and Japanese Larch for flooring and furniture.



Figure 1: Intermediate Size Sawmill.

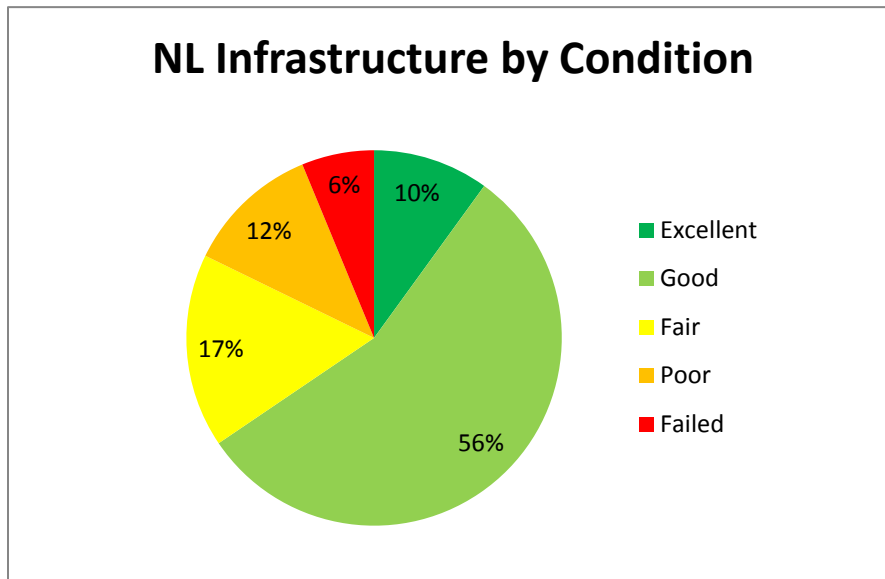


Figure 2: Pressure Treated Norway Spruce.

## Forest Resource Road Watercourse Crossings Database

The Forestry Services Branch through the Forest Engineering & Industry Services Division manages all forest resource roads on Crown Land in NL. The FEIS Division is also responsible for managing over 600 road structures which include bridges (wooden, steel panel and steel girder), large culverts (round or squat) and open-arch culverts.

It is estimated that approximately 90% of all FSB managed water-course crossings have been inventoried and inspected. During the field season of 2014, 227 structures were inspected in Newfoundland and 19 inspections were completed in Southern Labrador.



Each season, the Engineering Section addresses multiple watercourse crossing concerns. In 2014 a failed 50 foot steel girder bridge with centre pier was replaced with a 60 foot, clear span, steel panel bridge on Southside Road near Grand Falls – Windsor. Also, in collaboration with Nalcor, repairs were completed on the abutments of the Shanawdithit Bridge between Buchans and Star Lake. The deteriorating wooden sheeting on the abutments was removed and replaced with wooden 4 x 6” timbers covered with aluminum sheeting. The goal was to protect the structural components (abutments) from ice damage and extend the life of the bridge.





Bridge replacement on Southside Road – Grand Falls-Windsor (before and after)

## Managing and Protecting the Province's Forest Ecosystems

The Inventory and Mapping Program provides vital information needed to manage and protect the Province's forest ecosystems. Basic forest inventory information such as tree species, age, height site quality is extracted from digital aerial images through a process called photo interpretation. Each year approximately one tenth of the Island is re-flown and new digital pictures of the Province's forests are captured.

In 2014-2015 new digital photography was acquired for the Central portion of the Island (Forest Managements Districts 11 and 12), along with aerial photography for all of the 2014 major commercial harvested areas on the Island. This information was used to update the Province's cutover information and forest inventories. The photo interpretation program focused primarily on processing past aerial photography of the Baie Verte Peninsula area (District 9 and portions of District 10) and new geographic databases were finalized for the Avalon Peninsula (District 1) and the Southwest Coast of the Island (District 14).

In addition to photography work, seven field crews visited approximately 400 different timber stands collecting a wide range of timber and non-timber forest ecosystem information. Without forest inventory information/mapping, sustainable harvest levels could not be calculated, and the planning of harvesting, silviculture, road building, fire and insect protection activities would be difficult.



## Investing in Agriculture Research and Development

The Provincial Agriculture Research and Development Program (PARDP) is a provincially funded program totaling \$1 M annually. The PARDP has taken a proactive, strategic approach to agriculture research and development in the province through support of applied research projects. Funding was provided to Provincial scientists to continue research with the aim to grow and diversify the agriculture industry in Newfoundland and Labrador. Research focus for 2014-15 included the introduction of new crop varieties, livestock and crop management practices that improve the competitiveness of our industry in both domestic and export markets and researching animal health diseases that could potentially threaten the provincial livestock industry. Collaboration with industry remains essential to the success of the research program and ensures that the science conducted can be adapted for use on Newfoundland and Labrador farms.



## Investment of \$6.4 million through Growing Forward 2

Growing Forward 2 (GF2) is a federal-provincial 60:40 cost-shared program which provides funding to support innovation, competitiveness, and sustainability in the province's agriculture and agrifoods industry. This was the second year of funding for GF2 which is a five-year program with a budget of \$37 million for Newfoundland and Labrador. In 2014-15 GF2 spent \$6.4 million on approximately 140 projects. There are eight provincially delivered GF2 initiatives that are available to the agriculture industry: Agriculture Innovation Initiative; Future Farms Initiative; Environmental Sustainability Initiative; Food Safety, Biosecurity, Traceability Initiative; Market Development Initiative; Agriculture Land Development Initiative; Human Resource Development Initiative; and Business Development Initiative.

In 2014-15 GF2 contributed \$345,193 through the Agriculture Innovation Initiative towards a robotic milking system for Pure Holsteins Ltd. This system not only milks the cow when it chooses, it also monitors the animal's health and alerts the owner of any issues such that preventative or proactive measures may be taken when necessary. Pure Holsteins Ltd noted an 18% increase in milk production since installing the new system. The robotic unit addresses labour issues and allows the owners the freedom to allocate their time toward other on farm tasks.



Through the Environmental Sustainability Initiative, GF2 contributed \$180,910 toward a new dragline system for manure management for Headline Holsteins Ltd. This system of hoses and reels allows the business to apply manure to land directly from the manure

pit. This reduces labour and travel time when spreading manure the conventional way with manure spreaders and tractors. The dragline system also reduces compaction of the soil on fields which occurs when a heavy, fully loaded manure spreader travels repeatedly over fields during spreading.



Additionally, GF2 contributed \$92,739 towards enhancements in the secondary processing facility owned and operated by Five Brothers Artisan Cheese Inc. Five Brothers Artisan Cheese Inc. is a specialty cheese operation newly established in 2011. Five Brothers Artisan Cheese Inc. is currently making small volumes of cheeses for sale at the farmer's market and specialty restaurant level. They plan to increase production and develop the local, retail, and export markets over the next 10 years.

## Agriculture and Agrifoods Development Fund

The Agriculture and Agrifoods Development Fund (AADF) was established to encourage the development, diversification and expansion of large scale agricultural projects in either the primary or secondary processing sectors within Newfoundland and Labrador and is intended to stimulate and attract large scale investments in the industry. Funding priority is placed on projects that enhance competitive capability, support commercialization, expand market opportunities and create economic growth and employment in the agriculture and agrifoods industry. The budget for AADF in 2014-15 was \$2,550,000 of which \$1,413,095 was spent on land development to enhance food security in the province and on environmental stewardship.

## Provincial Agrifoods Assistance Program

The Provincial Agrifoods Assistance Program (AAP) provides financial assistance to farm businesses involved in primary production and secondary processing activities that will improve the economic viability, promote growth, and enhance the competitiveness of the provincial agriculture industry. Funding of \$2,250,000 was provided in 2014-15 primarily for land development and land development equipment but was also provided for diversification, technology adoption, secondary processing, environmental stewardship and fruit and vegetable storage initiatives. In 2014-15, the AAP provided close to \$800,000 to farmers across the province to clear and enhance new agricultural land. These projects enabled farmers to increase acreages resulting in better crop rotations, diversification into new crops, and a decrease in the need to import forages. As well, this program supported community pastures across the province in maintaining and improving grazing conditions and fencing with contributions totaling \$128,000.



The AAP also makes funding available to industry to enhance the economic viability of horticultural producers through the expansion, upgrade and construction of fruit and vegetable storage facilities including the purchase of related equipment. In 2014, \$90,000 was provided to eligible fruit and vegetable farms and processors for upgrades to facilities and equipment to allow efficiencies in their operations to meet food safety and industry-led compliance program requirements. Other projects were funded by the AAP to enhance individual farm productivity and efficiency or allow for the implementation of new technologies that will improve farm sales growth, decrease labour or other expenses and result in improved profitability of farms in the province.

## Environmental Farm Planning Program

The Environmental Farm Plan (EFP) Program is funded through Growing Forward 2 and continues to play an important role in Newfoundland and Labrador's agriculture industry. As the EFP program is the only program in the province to carry out agri-environmental policy, it has become an important tool used to build awareness and strengthen environmental stewardship associated with agricultural practices. In the 2014-2015 fiscal year, 61 EFPs have been completed/updated, all through one-on-one sessions with farmers. In addition to this, a new series of promotional materials and banners have been developed to promote the program to industry as well as promote industry activities to the public.

## Soil Survey Identifies Land for Agricultural Uses

Soil types and their properties were classified using a systematic process in the Springdale-King's Point area, then spatially represented on maps. The total area mapped was 4,640 hectares (~11,500 acres). The soils of the survey area were evaluated, based on data collected in the field, according to their capability for supporting forages. Suitabilities of the soil for other crop commodities can also be derived. Of the total area surveyed, 1,190 hectares (~2,940 acres) rated suitable, with moderate limitations, for forages based on soil and landscape characteristics. Land tenure is not considered. The soil surveys provides the basis for food security because it identifies areas in the province where the soil and agroclimatic properties are favorable for various agricultural uses. It then maps these areas to determine the location and define the areal extent of the arable land.

## Agriculture Extension Services

The Agriculture Extension Services section provides professional advisory services to the agriculture industry through eight Agriculture Development Officers (ADO), working from seven regional offices across Newfoundland and Labrador. The ADOs are the first point of contact for most producers and provide advice on production practices, information on various Government programs, business and agronomic expertise and assistance with the evaluation and development of agriculture business opportunities. In

the 2014-15 fiscal year, ADOs made 1871 contacts with individual clients for advisory services. Of those contacts, 60% were made with commercial farmers, 21% with new or beginning farmers, 29% were made for crop, livestock or farm business advisory services and 10% were for land issues.

The Agriculture Extension Services section remains active in delivering training opportunities for industry through the organization of commodity specific or regional workshops. In 2014-15, regional workshops were coordinated to provide sheep producers with information and training in available treatments and preventions for common health issues in the flock. As well, the Extension section partnered with industry to deliver a two-day workshop in Direct Farm Marketing. This workshop was designed to assist producers in every aspect of product marketing including topics such as: market design, required permits, branding, use of social media, promotion of products and the use of special event days.



In addition, Extension staff continues to be active in collecting data and producing Provincial Cost of Production studies for various agricultural commodities. Individual and industry average production data has been collected and released to participants for mink, forage, sod and selected vegetable commodities.

## REPORT ON PERFORMANCE

This section of the Annual Performance Report details the significant work undertaken and completed by the agency on its goals during the 2014-15 planning period and progress toward achieving the goals of the agency's 2014-17 Strategic Plan.

### **Issue 1: Ensuring the Longevity of Our Province's Forest and Agricultural Resources**

The Forestry and Agrifoods Agency has worked throughout this fiscal year to implement programs and services to ensure our forest and agricultural resources are healthy and viable for the long term. Advances have been made in many areas including animal disease diagnosis, environmental farm planning and stewardship, geographic information systems, climate change mitigation and energy conservation, provincial sustainable forest management strategy development, timber measurement, forest pest monitoring, and environmental management system development. The Agrifoods Development Branch and the Forestry Services Branch staff have worked to support government's strategic direction to enhance utilization, sustainability and public awareness of the forestry, agriculture and agrifoods sectors through efforts to ensure resource sustainability. We will continue to move forward on initiatives in 2015-16.

#### **Goal**

**By March 31, 2017, the Forestry and Agrifoods Agency will have advanced programs and initiatives to enhance the sustainability of the province's forestry and agriculture resources.**

#### **Objective:**

**By March 31, 2015, the Forestry and Agrifoods Agency will have enhanced programs and initiatives to support the sustainability of the forestry and agriculture resources.**

**Measure:** Enhanced programs and initiatives



### **2014-15 Indicators**

1. Advanced the completion of the Molecular Diagnostic Laboratory to enhance animal disease diagnostics.
  - The Molecular Diagnostics Laboratory was completed and is an integral part of the new Foreign Animal Disease Laboratory Complex which also includes the Rabies Laboratory, Necropsy Room and Incinerator Room. This newly renovated and expanded building allows for the routine determination of the cause of death of domestic and wild animals, as well as research and surveillance into more significant animal diseases such as rabies and avian influenza. Avian influenza, the most significant economic disease of the commercial poultry industry, is considered to be a “foreign animal disease” because, even though the virus can be found in wild birds, it is not normally present in the commercial poultry industry. Rabies is seen in Labrador on a cyclic basis and has crossed onto the island a few times in recent history (1988 and 2002) resulting in large scale eradication programs.
  
2. Expanded environmental farm planning and supported the implementation of beneficial farm practices such as water resource management, soil conservation, nutrient management, and environmental stewardship.
  - Expanded environmental farm planning and environmental stewardship through the implementation this fiscal year of a new position (Agriculture Drainage Specialist) dealing with water resource management for the agriculture industry; assisting the Water Resources Division with the issuance of water use licenses; and professional water management recommendations on the Cranberry Industry Development Program.
  - Supported the implementation of beneficial farm practices in soil conservation by providing professional support to biochar and fish soil amendment projects; nutrient management practices by providing recommendations to new independent nutrient management plans.
  - Supported environmental stewardship through specific environmental farm planning discussions by the Environmental Farm Planning Technician and through recommendations of the Land Resource Stewardship Division towards the Environmental Certificate of Approval process.

3. Expanded the Geographic Information System (GIS) to facilitate efficient storage, presentation and completion of geospatial farm data.
  - Expanded the Geographic Information System through the addition of new GIS data associated with the Premise Identification Program (PID) and ongoing construction of new soil profile database. PID is one of the components of a traceability system that allows for tracking animal movement from one premises to another. In the 2014-15 fiscal year, the PID Program, with support from GF2 funding, collaborated with the Office of the Chief Information Officer (OCIO) to develop a user interface and secure database for the Premises Identification Registry.
  
4. Advanced efforts in climate change mitigation and energy conservation measures for farms and agribusinesses.
  - Advanced efforts in this area through discussion of climate change mitigation measures with agriculture producers during the environmental farm planning process. As well as provision of fertilizer recommendations to agriculture producers in consideration of reducing nitrous oxide emissions which is a greenhouse gas.
  - Growing Forward 2, a federal-provincial-territorial initiative, supports environmentally responsible agriculture including environmental farm planning and the implementation of environmental beneficial management practices. GF2 support provides investment for farmers to invest in energy conservation measures on farms and the implementation of sustainable and cost competitive alternative energy sources. In 2014-15, GF2 invested in several projects including an on-farm solar power system and wind turbine. Other investments in climate change mitigation included no-till seeders for soil conservation, nutrient management plans, and irrigation systems for water resource management.
  
5. Commenced implementation of the 10 year Provincial Sustainable Forest Management Strategy.
  - The Provincial Sustainable Forest Management Strategy (PFSMS) was released at the CIF-NL (Canadian Institute of Forestry, Newfoundland and Labrador Section) AGM held in St. John's November 12-14, 2014. Implementation of the Strategy has commenced and has included the following initiatives:

- \$130,000 invested in joint climate change research with Canadian Forest Service and Memorial University.
  - Initiated review for Forest Protection Program structure.
  - \$250,000 invested in the development of LIDAR remote sensing tools for Enhanced Forest Inventory
  - Addition of a new Public Relation (PR) education staff member to develop a communication and PR campaign
  - Environmental Protection Guidelines have been updated.
6. Initiated improvements in timber measurement through enhancement and updating of the provincial scaling program.
- Initiated improvements through revising the Provincial Timber Scaling manual. The Timber scaling manual revisions brings both the language and methodology up-to-date with the Canadian Standards Association. It also introduces new scaling technology which has now been adopted in the province (digital remote scaling) as well as provides the opportunity for mass scaling (weight scaling) and for log scanning technology here in the province. These enhancements provide the industry with multiple up-to-date methods for scaling of timber. The final version of the manual has been vetted through industry and comments received are being incorporated in the final draft. Pending final approval by the Forestry Services Branch, the document should be ready for publication in 2015.
7. Focused forest pest monitoring on the rising Eastern Spruce Budworm populations and supported research/initiatives to reduce the potential impact on the forest resource.
- Current evidence in other jurisdictions (Quebec and New Brunswick) indicated that Eastern Spruce Budworm (ESB) populations are on the rise. To prepare for this likelihood in Newfoundland and Labrador, and to minimize impact on provincial forest resources, the Forestry Services Branch has initiated integrated forest pest management activities which included:
    - Increased pheromone trapping network to guide population monitoring
    - Increased branch sampling in localized areas where populations are increasing
    - Funding and participating in ESB research initiatives

- Participating in Atlantic Early Intervention ESB Program (on steering committee and conducting trials in Newfoundland and Labrador)
  - Utilization of FORPRO; FORPRO is insect damage scenario software tied to provincial wood supply analysis to improve harvest schedules to reduce potential volume losses.
  - Securing of dedicated lab facilities for processing of ESB samples.
8. Advanced the development of the Environmental Management System (EMS) to the international ISO 14001:2004 standard.
- The Forestry Services Branch has significantly advanced the development of an Environmental Management System on Crown forestry operations in 2014-15. The goal of obtaining EMS certification is to improve the efficacy and efficiency of forest management and gain accreditation for these improvements from an internationally recognized third party. Accomplishments in 2014-15 include:
    - Delivery of an Environmental Management System Operators Manual which includes Standard Operating Procedures and an Emergency Response Plan for commercial harvesting operations.
    - Development and delivery of an Environmental Management System brochure for domestic permit holders.
    - Consistent EMS inspections launched for monitoring commercial and domestic harvesting operations province wide.
    - Environmental Management System Policy communicated and posted at each Forest Management District office in the province.
    - Environmental Management System awareness and training extended into Labrador for commercial harvesting and road building.
    - Gap analysis completed by external auditors to ensure readiness for first audit to the CAN/ISO 14001-2004 Standard to take place in 2015.

## Objective, Measures and Indicators for 2015-16

### Objective

**By March 31, 2016, the Forestry and Agrifoods Agency will have advanced programs and initiatives to ensure the sustainability of the forestry and agriculture resources.**

**Measure:** Advanced programs and initiatives to ensure the sustainability of the forestry and agriculture resources.

### Indicators

- Concluded a resource analysis that will provide sustainable annual allowable cut levels for forest management districts across the province.
- Completed external and internal auditing as required to advance the development of an Environmental Management System on Crown forestry operations in 2015-16.
- Advanced efforts to implement the Provincial Sustainable Forest Management Strategy.
- Refined the areas of interests (AOIs) for agricultural development and the status of their protection.
- Advanced crop and livestock research.

## **Issue 2: Creating a Climate for Industry Sustainability, Growth and Diversification**

The Forestry and Agrifoods Agency has taken a proactive approach towards sustainability, growth and diversification of our forestry, agriculture and agrifoods industries. The Agrifoods Development Branch has supported agribusiness development through programs such as Growing Forward 2, Provincial Agrifoods Assistance Program, and the Agriculture and Agrifoods Development Fund. The Forestry Services Branch has been working diligently on industry related research projects to increase the forest industry global competitiveness, diversification and sustainability. All of the divisions within the agency play an important role in creating a climate for optimum usage of our resources for industry growth and in turn work towards supporting the strategic direction of Government as outlined in the Forestry and Agrifoods Agency's Strategic Plan 2014-17.

### **Goal**

**By March 31, 2017, the Forestry and Agrifoods Agency will have advanced programs and services for the sustainability, expansion and diversification of the forestry and agriculture industries.**

### **Objective**

By March 31, 2015, the Forestry and Agrifoods Agency will have enhanced activities to support the sustainability, growth and diversification of the Forestry, Agriculture and Agrifoods industries.

**Measure:** Enhanced activities to support sustainability, growth and diversification.

### **2014-15 Indicators**

1. Conducted soil surveys to identify new land for agriculture production and defined specific boundaries within existing agriculture areas.
  - Soil surveys were conducted to identify new land for agriculture through evaluation of new areas in the Springdale North/Kings Point area. The total area mapped was 4,640 hectares, of which 1,190 was deemed suitable for agricultural production with moderate limitations for

forage. Additionally, a significant amount of survey work was completed to evaluate Crown Land applications for agricultures leases.

- New agriculture areas of interest have been submitted to the Interdepartmental Land Use Committee for review for the purposes of increasing new land production. The boundaries of these areas have been identified based on soil suitability, proximity to road/distribution networks. Due to the fractured nature of soil resources in Newfoundland and Labrador, more detailed soil survey/identification within existing areas of agricultural importance is needed as a means to ensure strategic expansion and planning opportunities of existing farms as well as identifying areas available for new entrants.
2. Initiated nutrient management planning (NMP) on farms in Labrador and overseen the NMP contracts in Newfoundland.
    - In 2014-2015 the contracts for Nutrient Management proposals for 5 farms were reviewed/overseen by the professional staff of the Soils and Mapping Services Section. Once the projects were completed, the final reports were also reviewed and additional comments and suggestions to the funding committee (Growing Forward 2) were completed. Further to this, significant work regarding the development and implementation of nutrient management planning activities for Labrador was completed. This included completing soil sampling, soil analysis and nutrient recommendations for all 14 farms in Labrador; as well as providing Soil Test Reports and Farm Maps with Soil Sample Field ID to producers. This site specific NMP is to optimize the amounts, timing and types of nutrients used for soil productivity and minimize the potential for undesired environmental impact.
  3. Supported agribusiness development through Growing Forward 2, Agriculture and Agrifoods Development Fund and Agrifoods Assistance Program.
    - In 2014-15, Growing Forward 2 made significant contributions to the industry by providing over \$6.4 million in funding for farmers and industry associations to complete 140 projects. Growing Forward 2 funding provides investment for innovation, environmental sustainability, environmental farm planning, land development, food safety, agriculture awareness, human resource development and business development initiatives.
    - The Agriculture and Agrifoods Development Fund was established to

encourage the development, diversification and expansion of large scale agricultural projects in either the primary or secondary processing sectors, and is intended to stimulate and attract investments in the industry. The Fund invested \$1.41 million in the agriculture and agrifoods industry in 2014-15. Dairy Farmers of Newfoundland and Labrador received \$750,000 in 2014-15 to continue a large scale land development initiative to increase forage production for the sector and reduce the reliance on imported feeds. This investment enhanced the competitive capability and profitability of Newfoundland and Labrador dairy farms. The funding enabled 222 acres to be developed and 45 acres of existing land to be renovated on 18 dairy farms across the province in 2014-15.

- The Provincial Agrifoods Assistance Program provided financial support to promote the growth and commercialization of the agriculture sector. In 2014-15, \$2.25 million was invested in 124 projects across the province. On-farm funding was provided for land development activities including land clearing, enhancement, and on-farm access roads. Investment was also made in land development equipment such as rock rakes, harrows and limestone spreaders to increase the productivity of our agricultural land base. The Program also provided for on-farm diversification, secondary processing, technology adoption and environmental stewardship. Investments were also made into the expansion, upgrade, and construction of fruit and vegetable facilities including the purchase of washing, grading, and packaging equipment.
4. Provided sustainable forest management assistance for CBPPL through cost shared agreements.
    - Cost shared agreements with Corner Brook Pulp and Paper Limited (CBPPL) have been in place for this fiscal year in the areas of Silviculture, Inventory, Insect & Disease and Managed Forest Land Tax. These cost shared agreements reduce the cost of sustainable forest management activities of CBPPL.
  5. Supported industry research that optimizes the fibre value chain to increase the forest industry's global competitiveness.
    - Completed a number of industry related projects through the Forest Engineering and Industry Service Division
      - Technical sawmill analysis of an intermediate size sawmill in



- central Newfoundland.
- Funding to prepare a business plan for a wood pellet facility on Northern Peninsula.
- Testing of Norway Spruce Samples for grade and strength.
- Quality assessment of a sample of softwood logs derived from Lower Churchill Project.

Products derived from provincial forest resources are sold locally, nationally and internationally, hence global competition is very real. The massive downturn in the forest industry some 10 years ago resulted in a huge number of business closures and unfortunately Newfoundland and Labrador was not spared. For the remaining businesses to remain competitive on the global market they must continue to look at their fibre chain and seek ways to improve production while lowering costs. Funding provided for forest products research and development plays a very important function in assisting industry in remaining competitive.

6. Conducted research into bio-refinery and other innovative next generation technologies that support a diversified and sustainable forest sector.
  - The following research projects related to bio-refinery/biofuels were conducted during 2014-15:
    - Happy Valley-Goose Bay, NL pyrolysis oil manufacturing biorefinery scenario analysis: Feasibility of business models for the production of Biofuels in Labrador, including wood supply, process costs, market analysis, and potential proponents.
    - Development Study: assessing Connadh's Biofuel Opportunities Newfoundland and Labrador: Evaluated the feasibility of large scale ethanol production from cellulose on insular Newfoundland.
    - Experimental Investigation of Bioethanol Production from Wood Residues: Laboratory based development of ethanol extraction technology from cellulose feed stock.
    - Study of pyrolysis of mixed residues from sawmill and pulp mill (bark/saw dust/ saw chips) and impact on product quality and applications: Assessment of the impact of feedstock quality and availability for use in various biorefining technologies.

7. Established an industry steering committee to analyze and evaluate new industry development projects.  
This indicator has not been met during this fiscal year due to resource constraints. It will be carried forward for completion during 2015-16.
8. Initiated an analysis of the current provincial forest resource road network and seek out planning and design efficiencies to help lower fibre transportation cost.
  - Completed Phase I of a fibre flow analysis that would identify transportation efficiencies and fibre balance models that will assist forest managers in planning activities. The goal is to do better planning and to improve the flow of fibre to the industry thereby increasing their competitiveness. Work has been contracted to FP Innovations (Forest Operations R&D NFP Corporation in Pointe Claire Quebec) with the goal of a Phase II that will investigate additional transportation initiatives (driver training, road network & Design analysis, backhaul opportunities).

## Objective, Measure and Indicators for 2015-16

### Objective

**By March 31, 2016, the Forestry and Agrifoods Agency will have advanced programs and services to support the sustainability, growth and diversification of the Forestry, Agriculture and Agrifoods industries.**

**Measure:** Advanced programs and services to support the sustainability, growth and diversification of the Forestry, Agriculture and Agrifoods industries.

### Indicators

- Completed Zone 5 planning (Central Newfoundland) and a five-year (2016 to 2020) operating plan will be in place January 1, 2016 which will provide sustainable fibre flow for existing and future forestry operations.
- Conducted research into solid wood products options that support a diversified and sustainable forest sector.
- Continued delivery of Growing Forward 2, Agriculture and Agrifoods Development Fund and Agrifoods Assistance Program.
- Advanced nutrient management planning.

### **Issue 3: Building a Greater Awareness of the Forestry, and Agriculture Sectors**

A key area that both branches within the agency have been working on over this past year is that of creating a greater awareness to the public of our forestry and agriculture sectors. The Agrifoods Development Branch have invested in increasing public knowledge of our industry through initiatives such as agriculture fairs and Agriculture in the Classroom which educate school aged children on local food production. The Forestry Services Branch hired a Public Relations Specialist to strategically plan initiatives to promote the sector. Initiatives were moved forward this fiscal year to build on current awareness and education of our forest resources.

#### **Goal 3**

**By March 31, 2017, the Forestry and Agrifoods Agency will have supported initiatives to build greater awareness and education of our forestry and agriculture sectors.**

#### **Objective 1**

**By March 31, 2015, the Forestry and Agrifoods Agency will have enhanced initiatives to build awareness of our sectors.**

**Measure:** Enhanced initiatives to build awareness of our sectors.

#### **2014-15 Indicators**

1. Supported agriculture awareness initiatives, including Agriculture in the Classroom, agriculture fairs including the 2014 Agrifoods and Garden Show.
  - Growing Forward 2 invested \$157,662 in the 2014 Agrifoods and Garden Show held in Torbay in October 2014. This event was organized by the Newfoundland and Labrador Federation of Agriculture (NLFA) in cooperation with the Forestry and Agrifoods Agency to increase agriculture awareness in the province and promote local agriculture products.
  - Growing Forward 2 invested \$335,955 in the Agriculture in the Classroom initiative to promote agriculture to school-aged children. This project

delivered educational resources to over 12,000 students in Newfoundland and Labrador in 2014-15. Students learn about the importance of food production and healthy eating. As part of the Agriculture in the Classroom Initiative, students participate in Agriculture Literacy Week, Rooting for Health events, and Little Green Thumbs. Children learn to grow crops such as lettuce, beans, carrots and tomatoes directly in their classrooms, and learn about the importance of local food production.

- The Forestry and Agrifoods Agency participated in various agriculture fairs across the province in 2014-15 to enhance agriculture awareness to the public including the Trinity Conception Agriculture and Home Crafts Fair and the Humber Valley Agricultural Fall Fair.
2. Supported sector and regional development initiatives in the agriculture and agrifoods industry (Newfoundland and Labrador Federation of Agriculture [NLFA], 4-H, Young Farmers Forum, Dairy Farmers of Newfoundland and Labrador, regional pastures and fairs).
- GF2 provided investment to numerous sector and regional development initiatives in 2014-15. GF2 provided the NLFA \$537,000 to deliver various agriculture initiatives such as Agriculture in the Classroom, Young Farmers Initiative, Open Farm Day and the 2014 Agrifoods and Garden Show. Investment was provided to the NLFA to increase the visibility of the Newfoundland and Labrador Young Farmers Forum and promote opportunities for young farmers in agriculture.
  - The Agriculture and Agrifoods Development Fund invested \$750,000 in 2014-15 in a Land Development Initiative to increase the forage land available for dairy producers. This investment will reduce the reliance on imported forages and help support food security in the province.
  - The Forestry and Agrifoods Agency provided \$50,000 in operational support for the Provincial 4-H Council to deliver 4-H programming to youth; as well as \$75,000 in operational support for the NLFA to deliver programming and services to farmers across the province.
  - The Forestry and Agrifoods Agency continues to support regional pastures with investment from the Provincial Agrifoods Assistance Program. Nine pastures received \$112,951 in 2014-15 to enhance land development and construct perimeter fences. Investment in regional

pastures ensures that small livestock operators have access to affordable summer pasture for their sheep and beef cattle.

3. Supported National Forest Week activities.
  - National Forest Week (NFW) is a national program, and the Forestry Services Branch supported this initiative in 2014-15. The following NFW activities occurred:
    - A review of all public relations activities was initiated and an assessment of National Forest Week activities was undertaken.
    - A new webpage devoted to National Forest Week was developed.
    - A detailed marketing campaign was undertaken in an attempt to promote provincial activities happening across the province.
    - Various public events occurred in many forestry districts across the province. This included open houses, trade show appearances, Explore Forestry Day, and school visits.
    - Marketing for the annual National Forest Week Calendar Contest was expanded, which saw a 23% increase in the number of student submissions.
  
4. Provided forestry awareness education throughout the province.
  - In April of 2014 the Public Relations Specialist position was filled by the Forestry Services Branch. The aim of this position is to strategically plan, develop and implement public relation activities with the intent of promoting the sector and organization.
    - A review of all Public Relations activities was initiated and an assessment of current Forest Service activities was conducted.
    - Various public events and activities occurred throughout the province. This included workshops, conferences, public appearances, participation in trade shows, etc.
    - An initiative to promote forest fire prevention in conjunction with Smokey Bear's 70<sup>th</sup> Birthday was undertaken. Numerous public appearances occurred throughout the province.
    - In January of 2015, a Public Relations Committee was formed to begin strategic planning for the branch.

5. Advanced the implementation of the National Firesmart Community Program that is designed to help prevent and mitigate urban-wildland fires.
  - In 2014-15 FSB staff worked on Forest Fire and Prevention through a series of initiatives including:
    - Promotion of Smokey the Bear's 70th Birthday at various public events.
    - Attendance of several public events to promote the FireSmart program through distribution of literature.
    - Creation of promotional material focusing on the National FireSmart program.
    - Entered into discussions with two Newfoundland and Labrador communities to investigate applying FireSmart principles.
    - FSB staff attended local community FireSmart workshops (Train the Trainer) in Quebec City.

## **Objective, Measure and Indicators for 2015-16**

### **Objective**

**By March 31, 2016, the Forestry and Agrifoods Agency will have continued to enhance initiatives to build awareness of our sectors.**

**Measure: Continued to enhance initiatives to build awareness of our sectors.**

### **Indicators**

- Supported National Forest Week activities.
- Provided forestry awareness education throughout the province.
- Continued to build agriculture awareness through venues to reach various agriculture audiences including young farmers, school aged children and the public.
- Increased awareness of the importance of our soil resource through a soil symposium.
- Increased awareness of Real Property Tax Exemption Program through promotion through municipalities.

## Shared Commitments

The Forestry and Agrifoods Agency has legislative oversight for the following public bodies related to the forestry, agriculture and agrifoods sectors: Timber Scalers Board, Forest Land Tax Appeals Board, Chicken Farmers of Newfoundland and Labrador, Wooddale Land Development Advisory Authority, St. John's Urban Region Agricultural Appeal Board, St. John's Land Development Advisory Authority, Agricultural Land Consolidation Review Committee, Farm Industry Review Board, Newfoundland and Labrador Livestock Owners Compensation Board, Newfoundland and Labrador Crop Insurance Agency, and Newfoundland and Labrador Farm Products Corporation. See Appendix III for a listing of inactive forestry and agrifoods public bodies that report to the Minister responsible for the Forestry and Agrifoods Agency.

The Forestry and Agrifoods Agency also works with the federal government through programs such as Growing Forward 2 which is a federal-provincial 60:40 cost-shared five-year program with a budget of \$37 million for Newfoundland and Labrador. GF2 provides funding to support innovation, competitiveness and sustainability in the province's agriculture and agrifoods industry. 2014-15 was the second year of funding for GF2 which was released in June 2013.

## Opportunities and Challenges

There are opportunities and challenges for both the agriculture and agrifoods industry and the forest industry moving forward for 2015-16. The role of the Forestry and Agrifoods Agency is to ensure sustainability of our resources and facilitate growth within our industries.

### The Agriculture and Agrifoods Industry

Our agriculture and agrifoods industry has the opportunity to grow more agriculture products for the local marketplace. The agency will continue to promote and support through our programs and services, our agribusinesses in Newfoundland and Labrador. In expanding our industry, the agriculture industry also faces challenges in increasing local agriculture production in an economically and sustainable manner to ensure the optimal benefits to the agricultural community.

### The Forest Industry

The forest resource of the province is managed sustainably and therefore it provides opportunities to fulfill multiple values. There is opportunity to develop new industrial users, especially in central Newfoundland and Labrador. With advances in best management practices the agency advances the management of the resource. New research conducted in partnership with the agency into innovative uses of the forest resource, provides opportunities for the future. Of course with opportunities come challenges, which include identifying the best use for the forest resource. As well, industrial users of the resource are impacted by global markets. The Forestry and Agrifoods Agency will continue to work with stakeholders to advance the sector.



## Appendix I: Legislation

### Forestry and Agrifoods

1. ***Abitibi-Consolidated Rights and Assets Act.*** An act to return to the crown certain rights relating to timber and water use vested in Abitibi-Consolidated and to expropriate assets and lands associated with the generation of electricity enabled by those water use rights.
2. ***Foresters Act.*** An act establishing the Association of Registered Professional Foresters of Newfoundland and Labrador. The act outlines the objectives, structure, operation and membership of the Association.
3. ***Forestry Protection Act.*** An act to provide for the establishment and maintenance of a forest protection association in the province.
4. ***Forestry Act.*** An act respecting the management, harvesting, and protection of the forests of the province.
5. ***Motorized Snow Vehicles and All-Terrain Vehicles Act.*** An act respecting all-terrain vehicles.
6. ***Agrologists Act.*** An act establishing the Newfoundland and Labrador Institute of Agrologists. The act outlines the objectives, structure, operation and membership of the Institute.
7. ***Animal Health and Protection Act.*** An act respecting the health and protection of animals.
8. ***Crop Insurance Act.*** An act respecting the Newfoundland and Labrador Crop Insurance Agency. The Crop Insurance Plan is covered under this act. The plan offers insurance on insurable agricultural crops under the regulations. The act designates the Newfoundland and Labrador Crop Insurance Fund and also the Crop Insurance Agency.
9. ***Farm Practices Protection Act.*** An act respecting the protection of farm practices in the province.

10. ***Farm Products Corporation Act.*** An act respecting the administration of Farm Products Corporation.
11. ***Livestock Insurance Act.*** An act to provide for livestock insurance and respecting the Livestock Owners Compensation Board. The Livestock Insurance Plan is covered under this act. The plan offers insurance on beef, sheep, cattle and goats from predatory attacks by dogs or coyotes. The act designates the Livestock Owners Compensation Fund and the Livestock Owners Compensation Board.
12. ***Meat Inspection Act.*** An act to provide for animal and meat inspection in slaughterhouses. This act includes Meat Inspection Regulations which provide the details on standards and licensing for animal and meat inspection in slaughterhouses.
13. ***Natural Products Marketing Act.*** An act to allow for the creation of commodity boards, and a supervisory board to protect the interests of the general public, and an act to amend the *Natural Products Marketing Act* and the *Farm Practices Protection Act* to create the Farm Industry Review Board.
14. ***Plant Protection Act.*** An act respecting the protection of plants and the prevention of the spread of pests and diseases destructive to vegetation.
15. ***Poultry and Poultry Products Act.*** An act respecting poultry and poultry products such as chicken and eggs.
16. ***Vegetable Grading Act.*** An act respecting the grading of certain products of agriculture in the province.
17. ***Veterinary Medical Act.*** An act to revise the law about veterinary medicine.

## Appendix II: Statement of Revenues and Expenditures

Expenditure and revenues figures included in this document are based on public information provided in the Report on Program Expenditures and Revenues of the Consolidated Revenue Fund for Fiscal Year Ended 31 March 2015.

### STATEMENT OF EXPENDITURE AND RELATED REVENUE SUMMARY FOR THE YEAR ENDED 31 MARCH 2015 (Unaudited)

|  |                                     | Actual (\$)      | Amended (\$)     | Estimates<br>Original (\$) |
|--|-------------------------------------|------------------|------------------|----------------------------|
| <b>Executive and Support Services*</b> |                                     |                  |                  |                            |
| 1.1.01                                 | Minister's Office                   | 420,048          | 425,100          | 410,100                    |
| 1.2.01                                 | Executive Support                   | 2,331,051        | 2,440,300        | 1,826,700                  |
| 1.2.02                                 | Administrative Support              | 946,706          | 1,087,200        | 1,087,200                  |
|  | Less: Revenue                       | (2,290)          | (10,000)         | (10,000)                   |
| 1.2.03                                 | Administrative Support<br>(Capital) | 838,562          | 874,000          | 625,000                    |
| <b>Total</b>                           |                                     | <b>4,534,077</b> | <b>4,816,600</b> | <b>3,939,000</b>           |

*\*Includes expenditures from Natural Resources which was still a shared service for Executive and Support Services for 2014-15*

#### Forest Management and Protection

##### Forest Management

|        |  |            |            |            |
|--------|--|------------|------------|------------|
| 2.1.01 | Administration and<br>Program Planning   | 8,130,730  | 9,321,800  | 9,551,100  |
| 2.1.02 | Operations and<br>Implementation         | 10,309,913 | 10,628,200 | 10,551,900 |
| 2.1.03 | Silviculture<br>Development              | 7,573,622  | 8,101,500  | 8,335,500  |
|        | Less: Revenue                            | (2,645)    | (1,000)    | (1,000)    |
| 2.1.04 | Resource Roads<br>Construction (Capital) | 5,819,842  | 5,908,100  | 5,908,100  |

|  |  |                   |                   |                   |
|--|--|-------------------|-------------------|-------------------|
| 2.1.05                                   | Forest Industry<br>Diversification                       | 185,000           | 185,000           | 0                 |
| <b>Forest Protection</b>                 |  |                   |                   |                   |
| 2.2.01                                   | Insect Control   | 1,164,299         | 1,585,700         | 1,675,700         |
| 2.2.02                                   | Fire Suppression and<br>Communications                   | 3,831,037         | 4,113,800         | 4,113,800         |
|  |  | (43,186)          | 0                 | 0                 |
| <b>Total</b>                             |  | <b>36,968,612</b> | <b>39,843,100</b> | <b>40,135,100</b> |
| <b>Agrifoods Development</b>             |  |                   |                   |                   |
| <b>Land Resource Stewardship</b>         |  |                   |                   |                   |
| 3.1.01                                   | Land Resource<br>Stewardship -<br>Administration         | 1,757,217         | 1,864,100         | 2,119,100         |
|  | Less: Revenue  | (11,728)          | (33,000)          | (33,000)          |
| 3.1.02                                   | Limestone Sales  | 539,247           | 631,800           | 411,800           |
|  | Less: Revenue  | (173,100)         | (140,000)         | (140,000)         |
| 3.1.03                                   | Land Development<br>(Capital)                            | 2,252,874         | 2,270,000         | 2,300,000         |
| <b>Production and Market Development</b> |  |                   |                   |                   |
| 3.2.01                                   | Production and Market<br>Development -<br>Administration | 2,192,820         | 2,211,100         | 2,171,100         |
|  | Less: Revenue  | (5,481)           | (54,700)          | (54,700)          |
| 3.2.02                                   | Marketing Board  | 75,679            | 152,800           | 152,800           |
| <b>Agricultural Business Development</b> |  |                   |                   |                   |
| 3.3.01                                   | Agricultural Business<br>Development -<br>Administration | 1,757,294         | 1,877,700         | 1,958,700         |
| 3.3.02                                   | AgriInsurance and<br>Livestock Insurance                 | 327,280           | 427,000           | 427,000           |
|  | Less: Revenue  | (158,548)         | (210,000)         | (210,000)         |
| 3.3.03                                   | Agricultural Initiatives                                 | 2,242,097         | 2,250,000         | 2,250,000         |

|   |   |                   |                   |                   |
|---|---|-------------------|-------------------|-------------------|
| 3.3.04                                    | Agriculture and<br>Agrifoods Development<br>Fund          | 1,413,095         | 2,550,000         | 2,550,000         |
| 3.3.05                                    | Growing Forward 2<br>Framework                            | 6,661,283         | 7,140,700         | 7,140,700         |
|   | Less: Revenue   | (4,285,384)       | (3,829,500)       | (3,829,500)       |
| <b>Animal Health</b>                      |   |                   |                   |                   |
| 3.4.01                                    | Animal Health -<br>Administration and<br>Support Services | 3,417,221         | 3,473,000         | 3,094,000         |
|   | Less: Revenue   | (785,528)         | (580,000)         | (580,000)         |
| <b>Agrifoods Research and Development</b> |   |                   |                   |                   |
| 3.5.01                                    | Research and<br>Development                               | 866,364           | 985,900           | 985,900           |
|   | Less: Revenue   | (711,688)         | 0                 | 0                 |
| <b>Total</b>                              |   | <b>17,371,014</b> | <b>20,986,900</b> | <b>20,713,900</b> |
| <b>Total Forestry and Agrifoods</b>       |   | <b>58,873,703</b> | <b>65,646,600</b> | <b>64,788,000</b> |

## Appendix III: Inactive Entities Reporting to the Minister

The following category three public bodies that report to the Minister Responsible for Forestry and Agrifoods Agency were inactive for the period April 1, 2014 to March 31, 2015. In the event that one of these public bodies becomes active, it will prepare and table an Activity Plan and subsequent Annual Performance Report in compliance with the *Transparency and Accountability Act*.

### Forest Land Tax Appeals Board

The Forest Land Tax Appeals Board was created pursuant to the *Forestry Act (1990)*. The mandate of the board is to hear appeals from landholders who disagree with the way in which Part III of the *Forestry Act (1990)* is applied. Appeals may concern the contents of a Certificate of Managed Land issued to the appellant; entries made with respect to the appellant in the Assessment Roll; the amount of tax payable by the appellant; or whether or not the appellant is even liable for taxation under Part III of the act.

### Timber Scalers Board

The Timber Scalers Board was created pursuant to the *Forestry Act (1990)*. Under section 124 of the act, the duties of the board are to: examine the ability and knowledge of persons who apply to be certified to scale timber; hear appeals to scaling disputes; and recommend to the minister new scaling methods before they are used.

### Newfoundland and Labrador Farm Products Corporation

The Newfoundland and Labrador Farm Products Corporation was created pursuant to the *Farm Products Corporation Act*. The corporation has a mandate to establish abattoirs, cold storage plants, warehouses, packing and processing plants and other buildings and establishments of every kind necessary and suitable for the handling, preparation, processing and storage of farm products of every kind both animal and vegetable for the purpose of facilitating the development of farm products in the province.